



RULES & INSTRUCTIONS

Lost/Damaged Books

In case of lost/damaged books, the borrower has to return the same edition of the book with Rs.20/- as processing fees, or the defaulter has to pay the 10 times the cost of the books.

For multi-volume set, the defaulter shall be liable to replace the whole set or pay 10 times the cost of the volume along with processing fee.

E-Resources Usage Policy

All electronic resources available through the Central Library are for academic purpose only and are governed by license agreements. It is the responsibility of the users to ensure that e-resources are used for academic & research purposes only. For more info please visit at: <http://library.cuo.ac.in/online-e-resources>

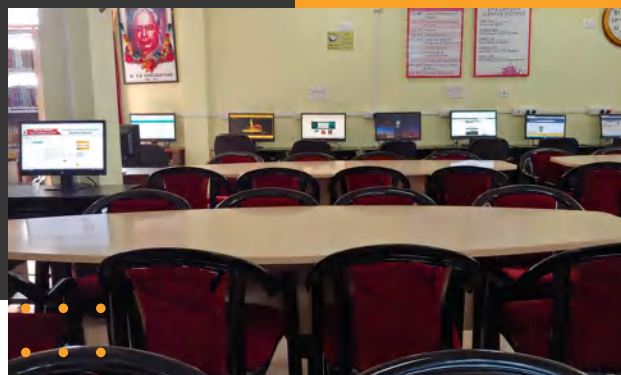
General Instructions for Users

- Please bring the University ID Card while using the Library.
- University ID Card / Library Card is mandatory for all library transactions.
- Please maintain atmosphere of dignity, peace and silence in the library premises.
- Please handle the library materials with utmost care.
- Use of personal gadgets, music-sets and Walkman, iPods, etc. in the library is not permitted.
- Keep your personal belongings at the property counter.
- Smoking, food and drinks are not allowed in the library.
- No material from the library should be taken out without proper issuing.
- Any type of violation may lead to a disciplinary action.

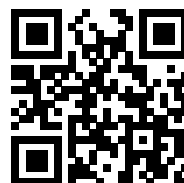
CONTACT US

A. Central Library
Central University of Odisha
PO-NAD, Sunabeda
Koraput - 763 004, Odisha

M. library@cuo.ac.in
W. <http://library.cuo.ac.in/>



Library Website



Library OPAC

For further assistance, please contact at:
library@cuo.ac.in



CENTRAL UNIVERSITY OF ODISHA
ଓଡ଼ିଶା କେନ୍ଦ୍ରୀୟ ବିଶ୍ୱବିଦ୍ୟାଳୟ

କେନ୍ଦ୍ରୀୟ ପାଠାଗାର • କେନ୍ଦ୍ରୀୟ ପୁସ୍ତକାଳୟ • Central Library



**KNOW
YOUR
LIBRARY**



ABOUT CENTRAL LIBRARY

The Central Library plays a vital role in furthering the academic and research mission of Central University of Odisha and facilitates creation and dissemination of knowledge. Soon after the formal appearance of the Central Library in the year 2009, immediate emphasis was given for a good collection development on Text Books and Reference Books.

At present the library has a collections of more than 42,000 text and reference books. These include books on all relevant subjects including fiction, literature and general interests.

The Central Library is currently functioning from two locations (i) Sunabeda Campus and (ii) Landiguda Campus. Users can avail all services of the library at both the locations

Library Hours

Weekdays (Mon-Fri) - 9:30 AM to 6:00 PM (Both Campus)

Saturdays & Sundays - 10:00 AM to 4:00 PM
(Main Campus Only)

Gazetted Holidays - Closed

Library Collections

Textbooks 42,000+ **E-Books** 4071 **E-Resources** 10

Bound Volumes 900 **NDL E-Resources** 02 **CD/DVD** 200

Newspapers & Magazines 14 **Thesis & Dissertations** 100+

E-RESOURCES



E-Resources & Databases

- EBSCO Academic Search Elite
- Emerald Publishing
- Economic & Political Weekly (EPW)
- EPWRF India Time Series (ITS)
- IndiaStat
- Institute for Studies in Industrial Development (ISID)
- JSTOR
- Oxford University Press (OUP)
- Project MUSE
- Taylor & Francis

E-Books

Biology(07), Biomedical & Life Sci.(777), Business, Management & Economics(389), Communication & Media Studies(61), Computer Sci. & IT(77), Earth & Env. Sc.(176), Eco. & Finance(461), Education & Psy.(562), Hindi(103), Journalism & Mass Comm.(38), Language, Literature & Linguistics(38), Mathematics & Statistics(450), Sanskrit(17), Sociology & Anthropology(121).

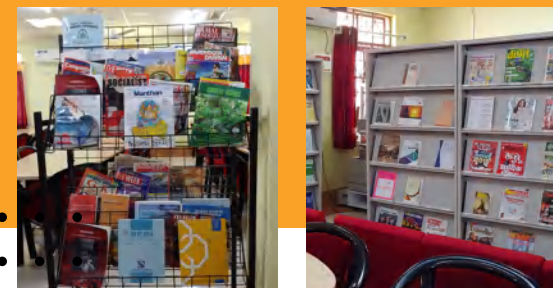
Research Support Tools

Ouriginal (previously URKUND) and Turnitin Feedback Studio.

Off-Campus Access to Subscribed E-Resources (INFED)

Faculty members, Research Scholars & Students can access the subscribed e-resources through "Shibboleth" 24X7 with an internet connection. Please visit at <https://idp.cuo.ac.in/>

SERVICES & FACILITIES



Borrowing Privileges

Categories of Users	No. of Books	Issue Period
U.G. Students	03	15 days
P.G. Students	04	15 days
Research Scholars	06	30 days
Faculty/ Academic Staff	15	180 days
Group A Staff	05	30 days
Group B & C Staff	03	30 days

Late fee for overdue charges is Re. 1/- per day.
After 07 days overdue charges Rs.5/- per day.

User Services

- Circulation Service (Issue & Return)
- Display of New Arrivals
- Document Delivery Services
- Library Orientation Programs
- Originality check through Ouriginal & Turnitin
- References & Information Services
- Remote Access Facility (INFED)
- Subject/Research Guides, Cyber Library, IDR, ETDs, CUO's IRINS, Web-OPAC & News Clippings, etc.

Infrastructure & Facilities

- AC Reading Area with seating capacity of 110 users at a time
- CCTV Surveillance
- Computers for E-Resource Zone & OPAC Terminal
- Talking Library for Visually Impaired Students
- Property Counter
- Print Journals & Magazines Section
- Wi-Fi Connectivity, etc.